

A BRIEF OVERVIEW

Cat and Thomas MOUNTAINS PRESERVE

This 1,850-acre parcel was acquired by the Lake George Land Conservancy (LGLC) in 2003. Its preservation is a major accomplishment in protecting the Lake George watershed, as one of the lake's larger tributaries, Finkle Brook, flows through the preserve and forms Edgecomb Pond, the drinking water source for Bolton Landing.

In addition to preserving Edgecomb Pond, the Cat and Thomas Mountains Preserve protects the largest tract of contiguous land remaining in Bolton, yet another step in safeguarding the majestic viewshed of Lake George.

Just a five-minute drive from quaint Bolton Landing, the trails to the summits of Cat and Thomas provide a rewarding introduction to hiking the Adirondack trails. All of the preserve's trails have worthwhile views of Lake George's south and central basins and the southwestern Adirondacks.

The cabin that sits on top of Thomas Mountain was inherited by LGLC with the land purchase. The cabin's good condition and lack of vandalism over the years speaks to the character of our region's hikers who love the preserve as their own.

Hunting (no trapping) is allowed at the preserve; a hunting permit is required by contacting LGLC. Hikers should be aware of hunting seasons and wear bright colors and hike in groups to minimize risk.

LGLC welcomes your comments and reports of damage or trail maintenance needs. Please contact us at 518-644-9673 or stewardship@lgc.org.

PRESERVE LOCATION

**Valley Woods Road
Bolton Landing, NY 12814**

Trailhead Coordinates:
43° 36' 14" N
73° 41' 33" W

From the Northway (I-87):
From Exit 24, head east on County Route 11 for approximately 2 miles. Turn right onto Valley Woods Road. The preserve is about 1/10-mile on the right.



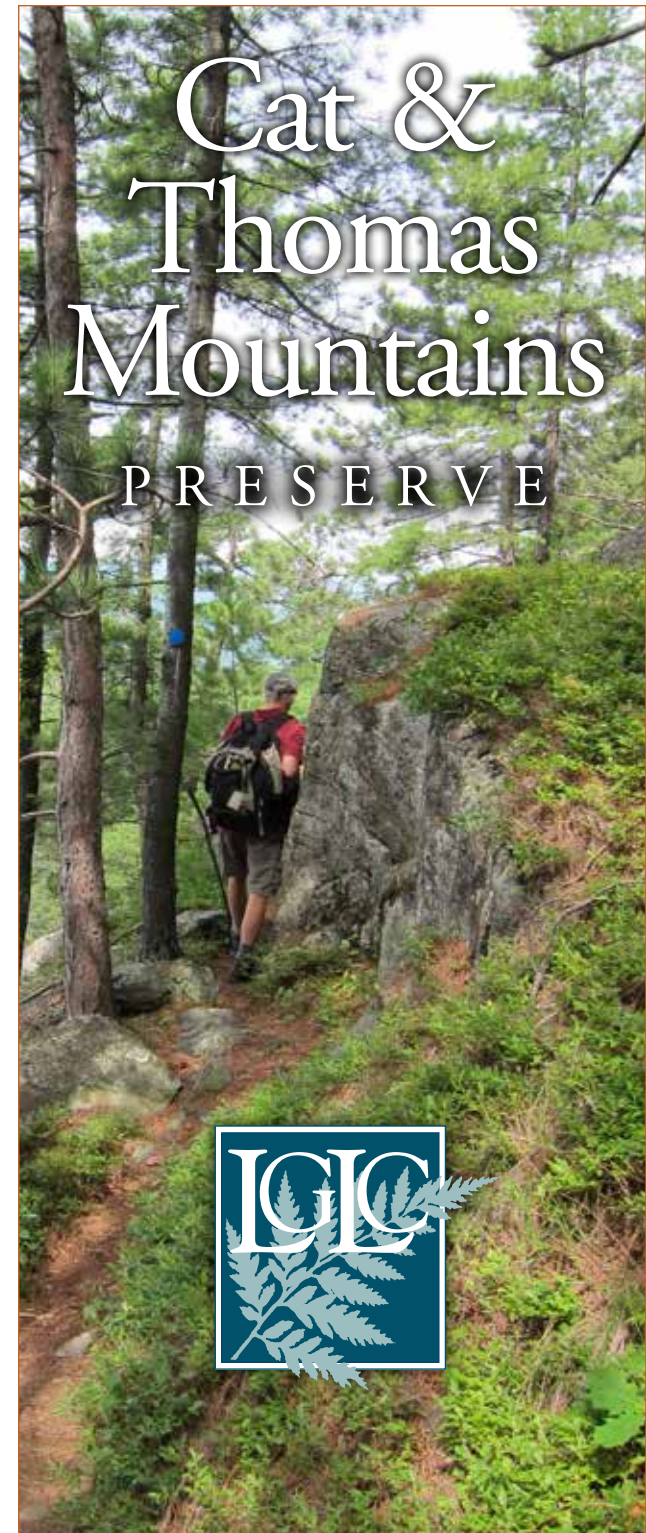
From Bolton Landing (Sagamore Road and Route 9N): Travel north on Route 9N for approximately 1.7 miles to the junction with County Route 11 (also called Bolton Landing-Riverbank Road). Turn left/west on County Route 11 for approximately 2.5 miles. Turn left onto Valley Woods Road. The preserve is about 1/10-mile on the right.

If the parking lot is full, you may park along the road; please do not block neighboring driveways.

The Lake George Land Conservancy's nature preserves are open to the public from dawn to dusk year-round for educational, scientific, and passive recreational pursuits.

Visit us online at www.lglc.org for information on our nature excursions and events, land protection, and preserving Lake George's unique natural heritage.

4905 Lake Shore Drive
P.O. Box 1250
Bolton Landing, NY 12814
(518) 644-9673
www.lglc.org



Cat and Thomas

PRESERVE TRAILS

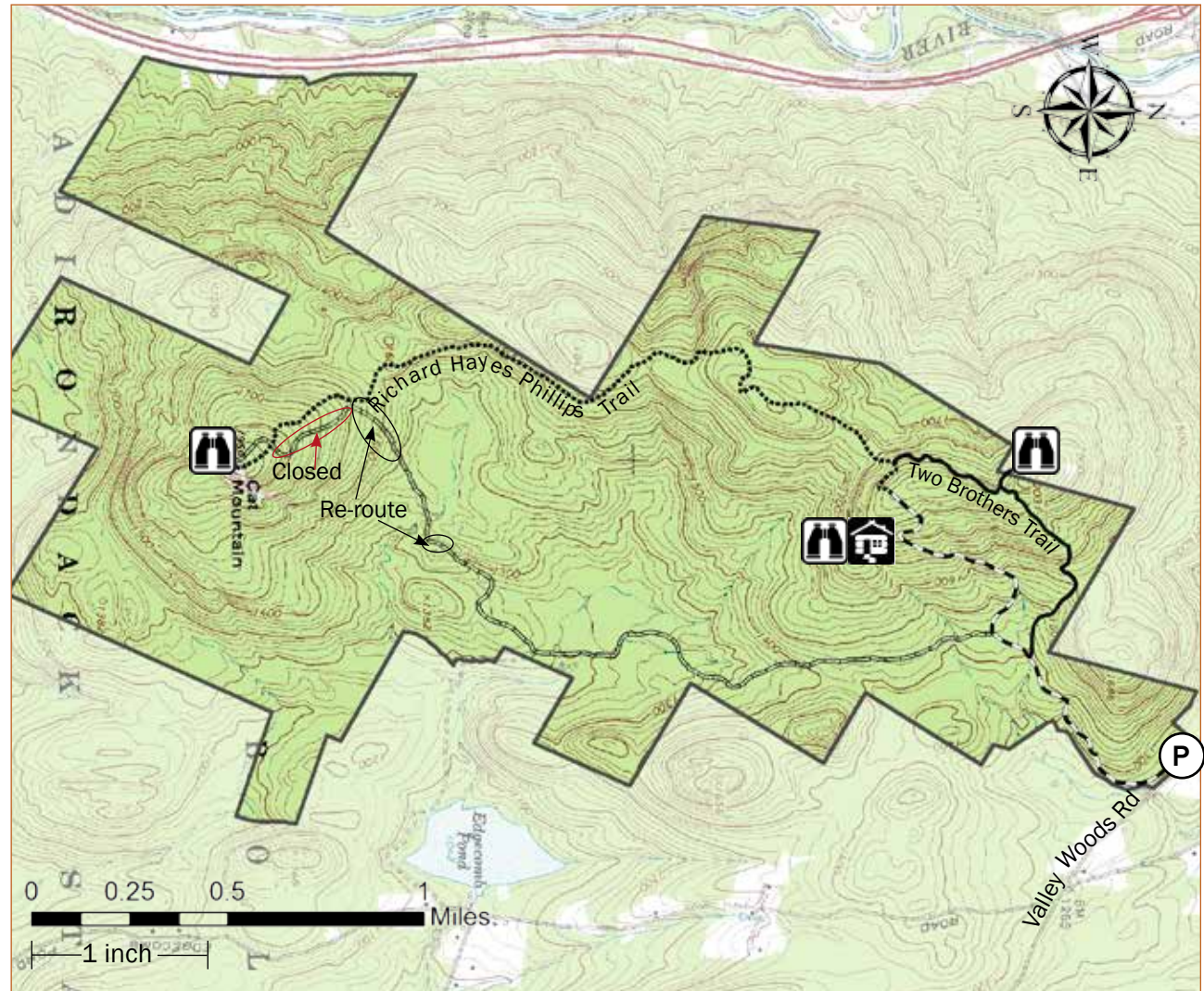
The orange trail to Thomas Mountain follows an old logging road with good footing, winding 716 feet up the mountain to end at a quaint cabin that provides shelter and space to rest.

Branching off from the orange trail just above the old gravel pit is the new blue trail. A slightly longer alternative to the logging road, this trail, named the Two Brothers Trail, climbs through a beech and maple forest to an elevation of just under 2,000 feet and includes a quick spur trail that ends with a fantastic view of the Adirondacks to the west. The Two Brothers Trail meets up with the ridge trail, also with blue markers; hikers can continue south to Cat Mountain or a short distance east to the cabin.





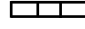



The ridge trail, re-named the Richard Hayes Phillips Trail in 2012, has blue markers and runs 2.3 miles from the Thomas Mountain cabin to the summit of Cat Mountain at 1,956-feet. Footing is more difficult than the other trails and hikers trying this section should be prepared for the longer, more challenging trek.

The yellow trail to Cat Mountain also follows a logging road, cutting south from the orange trail approximately 0.15 miles past the gravel pit. The logging road continues for 1.3 miles before turning off of the road to ascend 736 feet to the summit of Cat. The summit offers a 270° view of Lake George and the Adirondacks. The second half of the yellow trail is rocky and has less stable footing.

***NOTE: Two sections of the yellow trail have been re-routed and a third has been closed to avoid heavy eroded areas. New routes are blazed. Please stay on marked trails and follows signage.**



PRESERVE MAP KEY

	Orange Trail	1.4 miles
	Two Brothers Trail	1.0 mile
	Two Brothers Spur (to lookout)	0.1 miles
	Richard Hayes Phillips Trail	2.3 miles
	Yellow Trail *See Note	2.4 miles
	Scenic Lookout	
	Thomas Mt. Cabin	
	Parking Lot/Kiosk	

PRESERVE USE GUIDELINES

- Please hike only on the marked trails shown on the trail map.
- Please be courteous of other guests at the preserve.
- No unauthorized removal of plants or animals. Hunting is allowed with an LGLC permit. Please contact LGLC for permit application.
- No motorized or non-motorized recreational vehicles of any kind allowed on the preserve.
- Please keep dogs leashed at all times.
- No camping or fires. Please do not litter.